

Traveler!

A journey through the wonderful world of miniatures awaits you. You will see Silesia bustling with life and the idyll of the Polish countryside.

We have made every effort to reproduce the reality as accurately as possible and present the life of the citizens of Kolejkowo surrounded by buildings from Silesia. While visiting, remember to carefully look at the model, because only then can you discover the wonders of the world reduced by 25 times!

Kolejkowo in numbers



15
trains



60
railway wagons



242
buildings



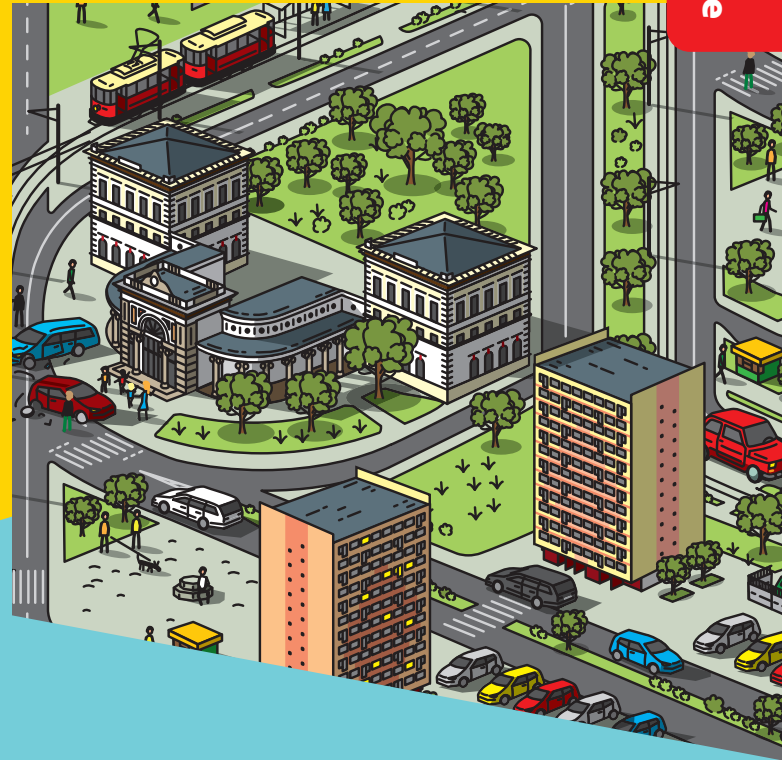
3437
figurines of
people and
animals



720
meters
of railway
tracks



+
bridges, tunnels,
reservoirs, day
and night



What is allowed and what is not?



You should take pictures, make videos and share the joy with others



You are not allowed to touch the mock-up and vehicle models, even if it was supposed to improve the exhibition



In Kolejkowo the only smoke that is allowed is the one made by steam engine driver in the hearth



You are not allowed to bring food and drinks to the mock-up area

A wonderful world in miniature!

Discover the charms of life of small residents on a unique railway model

Share
your visit!



Google



tripadvisor

Check if you are perceptive!
Do well and your efforts
will be rewarded by our
conductors. Exercise your
senses and look carefully for:

2 ×
cat



2 ×
squirrel



1 ×
goat



9 ×
rat



1 ×
crocodile



1 ×
painter



15 ×
dog



1 ×
eagle



14 ×
dwarf



2 ×
fox



10 ×
pigeon



1 ×
note



1 ×
Superman



1 ×
rabbit



1 ×
sculptor



1 ×
Indian



Trivia



The heart of the model is a proprietary computer system consisting of **2 servers** and **12 8-port switches** connected by **14 km of cables**.



The preparation of one figurine takes **6 hours** of work for an experienced modeler, starting from carving in wax, through preparing a silicone mold and pouring resin, ending with manual painting.



The most impressive building in Kolejkowo is the Town Hall in Wrocław. The construction of this historic building took 3 modelers **2,522 hours**. Pay attention to the sculptures and stained glass windows.



In Kolejkowo, trains run at a speed of **1.5 km / h**, which is **12 km per day**, about **350 km per month** and **4,380 km per year**.



In Kolejkowo, the day lasts **9 minutes** and the night **4 minutes**. After sunset, lanterns light up, and in the apartments of miniature residents, lights come on.



Creating a miniature building is a long process. It is necessary to prepare documentation, **hundreds of photos** of the original and dimension it with a laser meter. Then there is manual cutting, twisting, putting, sanding, painting, wiring ... and it's done :-)